



Scoping the range of datasets that could be included in a local SEND dashboard

Martin Cunnington, Consultant
9th October 2018

Introduction

During 2017/18 the Council for Disabled Children worked collaboratively with parent carers, commissioners and system leaders to develop a [national logic model](#) to promote an integrated approach to raising aspirations and achieving improved outcomes for children and young people with SEND. This was the first phase of a broader project to support local areas develop a multi-agency SEND dataset to measure progress in implementing the government's SEND reforms.

Currently Local Authorities, Clinical Commissioning Groups, education settings and commissioned providers are required to submit assurance, performance and activity data on supporting children and young people with special educational needs and disabilities aged 0-25 to a range of local, regional and national bodies. This has led to the creation of multiple datasets that are held by different agencies. In addition, national bodies such as the Department for Education, NHS Digital and Public Health England publish a broad range of national datasets that can be difficult to align and provide answers to the questions local commissioners and providers are asking.

During 2018/19 the intention is to work with local areas to test and develop an approach that brings a range of local and national SEND datasets together. With the intention of supporting system leaders across health, education and social care have a single source of the truth for monitoring progress against implementing the government's SEND reforms.

The slide deck brings together a range of thoughts and ideas that were presented and discussed at a recent Accelerated Working Group session held in Plymouth.

Mapping the current range of national resources and databases that are available to local areas

Organisation	Resource	Notes
Department for Education	Special educational needs: an analysis and summary of data sources – May 2018	Provides an analysis of a range of national datasets linked to children and young people with SEND. There are also links to other relevant datasets.
	Local Authority Interactive Tool (LAIT)	Interactive spreadsheet comparing a range of data across all local authorities in England.
Ofsted/CQC	Local area SEND inspection outcome letters	Links to all local area SEND inspection outcome letters from March 2017. Previously they were published on the DfE site.
Local Government Association	LG Inform	Brings together a range of performance and finance indicators to enable benchmarking across local authorities.
	LG Inform Plus	Online suite of tools to promote information sharing, improving quality and efficiency of services.
	Transforming Care Programme	Access to a range of information and resources relating to the Transforming Care Programme.
NHS Digital	Monthly statistics on learning disability and autism	Monthly statistics from the Assuring Transformation and Mental Health Services datasets. Monthly data is presented at a national, Specialist Commissioning Hub and CCG level.
	Mental health services monthly statistics	Monthly data presented at a national, CCG, LA, STP and provider level.
	Community services statistics for children, young people and adults reports	The Community data set expands the previous children and young people's health dataset to include data from adult providers. The data can be viewed on a monthly basis from providers. However, not all providers are currently submitting returns.

Mapping the current range of national resources and databases that are available to local areas

Organisation	Resource	Notes
NHS Digital	Adult social care analytical hub	Central platform providing access to a range of business intelligence tools relating to adult social care, including national minimum dataset for social care.
	General Practice data hub – Health and care for people with learning disabilities	Datasets that compare health conditions of people recorded as having a learning disability.
My NHS website	CCG Improvement and Assessment Framework indicators	Latest datasets linked to individual CCG's results from their IAF returns. My NHS website also includes a range of other indicators such as Paediatric Intensive Care outcomes.
Public Health England	Child health profiles	A range of child health indicators to support local government and health service professionals improve children and young people's physical and emotional health and wellbeing and reduce health inequalities.
	Public health data and analysis tools Public Health Outcomes Framework list of indicators	A range of datasets to support local government and health service professionals improve services and reduce health inequalities.
Office of national statistics	Nomis database	Provides a access to a range of datasets linked to the number of children and adults claiming state benefits such as disability living allowance, including a breakdown by age, level of DLA being claimed and impairment.
Institute of Public Care, Oxford Brookes University	PANSI database	Projecting Adult Needs & Service Information (PANSI) database brings together data on adults aged 18-64 who have a learning disability and autism, including the predicted rates for those who display behaviour that challenges at a local authority level.
Chartered Institute of Public Finance and Accountancy	SEN benchmarking club for local authorities	A fee based service that enables local authorities to benchmark high cost placements based on a child's/young person's demographic and SEN profile.

A list of national indicators that could be used to support the development of a local multi-agency SEND dataset

Data source	Indicator	Links to the logic model
Attainment, DfE	<ul style="list-style-type: none"> • Early years foundation stage: % of SEN pupils achieving a good level of development. • Phonics screening check: % of SEN pupils who met the required standard. • Key stage 1: Attainment gap in reading, writing and mathematics. • Key stage 2: Attainment gap in reading, writing and mathematics. Rate of progress for SEN pupils in reading, writing and mathematics compared to pupils with no SEN. • Key stage 4: Attainment 8 score by SEN provision. • Post 16: % of pupils with SEN achieving Level 2 in English and Mathematics compared to pupils with no SEN. 	<p>Outcomes of integration at all levels:</p> <ul style="list-style-type: none"> • I am supported to make progress with my studies and get the fullest education possible in a way that does not limit my later options. • I am supported to feel confident and develop my own dreams & goals. <p>Impact of integration:</p> <ul style="list-style-type: none"> • More children and young people do well at all levels of learning. • More young people with SEND are in paid employment.
Looked After Children attainment, DfE	<ul style="list-style-type: none"> • Key stage 2: % of looked after children with SEN achieved the expected level in reading, writing and mathematics. • Key stage 4: Attainment 8 score for looked after children with SEN. 	
Destinations, DfE	<ul style="list-style-type: none"> • After Key Stage 4: % of pupils with SEN who were in sustained education or employment/training six months after completing Key Stage 4. • After Key stage 5: % of pupils with SE who were in sustained education or employment/training six months after completing Key Stage 5. • % of 16-18 year olds with SEN who are NEET. 	

A list of national indicators that could be used to support the development of a local multi-agency SEND dataset

Data source	Indicator	Links to the logic model
Destinations, Adult Social Care Outcomes Framework, NHS Digital	<ul style="list-style-type: none"> • % of adults with a learning disability in paid employment compared to the % of all respondents to the Labour Force Survey classified as employed. • % of all adults with a learning disability who are known to the council, who are recorded as living in their own home or with their family. 	<p>Outcomes of integration at all levels:</p> <ul style="list-style-type: none"> • I am supported to feel confident and develop my own dreams & goals. <p>Impact of integration:</p> <ul style="list-style-type: none"> • More young people with SEND are in paid employment.
Absence and exclusions, DfE	<ul style="list-style-type: none"> • % of sessions missed due to overall absence, by SEN provision. • % of pupils with a permanent exclusion, by SEN. 	<p>Outcomes of integration at all levels:</p> <ul style="list-style-type: none"> • I am supported to make progress with my studies and get the fullest education possible in a way that does not limit my later options. • I am supported to feel confident and develop my own dreams & goals. <p>Impact of integration:</p> <ul style="list-style-type: none"> • More children and young people do well at all levels of learning.
Quarterly SEN Tribunal statistics	<ul style="list-style-type: none"> • Registered SEN appeals and rate per 10,000. 	<p>Outcomes of integration at all levels:</p> <ul style="list-style-type: none"> • Children and young people and their families receive the right support at the right time and place. • Families are heard, involved & consulted.

A list of national indicators that could be used to support the development of a local multi-agency SEND dataset

Data source	Indicator	Links to the logic model
<p>Mental Health Services Monthly statistics</p>	<ul style="list-style-type: none"> • People in contact with mental health services aged 0-18 at the end of the reporting period. • People in contact with children and young people’s mental health services at the end of the reporting period. • Under 16 bed days on adult wards in the reporting period. • Age 16 bed days on adult wards in the reporting period. • Age 17 bed days on adult wards in the reporting period. • Open ward stays at the end of the reporting period aged 0-18. • LAC with a referral starting in the reporting period aged 0-18. • Children and young people with a child protection plan with a referral starting in the reporting period aged 0-18. • Young carers with a referral in the reporting period aged 0-18. • Average waiting time for children and young people between referral and second contact. • Average waiting time for referrals for children and young people between referral and second contact. 	<p>Outcomes of integration at all levels:</p> <ul style="list-style-type: none"> • I am supported to feel confident and develop my own dreams & goals. • My family works better and we are more resilient. • CYP and their receive the right support, at the right time and place. <p>Impact of integration:</p> <ul style="list-style-type: none"> • CYP with SEND are happy and have friends. • CYP with SEND and their parent carers are confident in navigating the system and managing their health and care needs. • CYP with SEND are safe from harm. • CYP with SEND can access the services they need to keep them healthy.

A list of national indicators that could be used to support the development of a local multi-agency SEND dataset

Data source	Indicator	Links to the logic model
<p>Learning Disability Services Monthly statistics</p>	<ul style="list-style-type: none"> • Patients by age, gender, ethnicity, diagnosis of learning disability/autism and main diagnostic category for admission. • Patients by inpatient setting, ward security level, CQC compliance and legal status. • Patients by planned transfer. 	<p>Outcomes of integration at all levels:</p> <ul style="list-style-type: none"> • I am supported to feel confident and develop my own dreams & goals. • My family works better and we are more resilient. • CYP and their receive the right support, at the right time and place. <p>Impact of integration:</p> <ul style="list-style-type: none"> • CYP with SEND are happy and have friends. • CYP with SEND and their parent carers are confident in navigating the system and managing their health and care needs. • CYP with SEND are safe from harm. • CYP with SEND can access the services they need to keep them healthy.

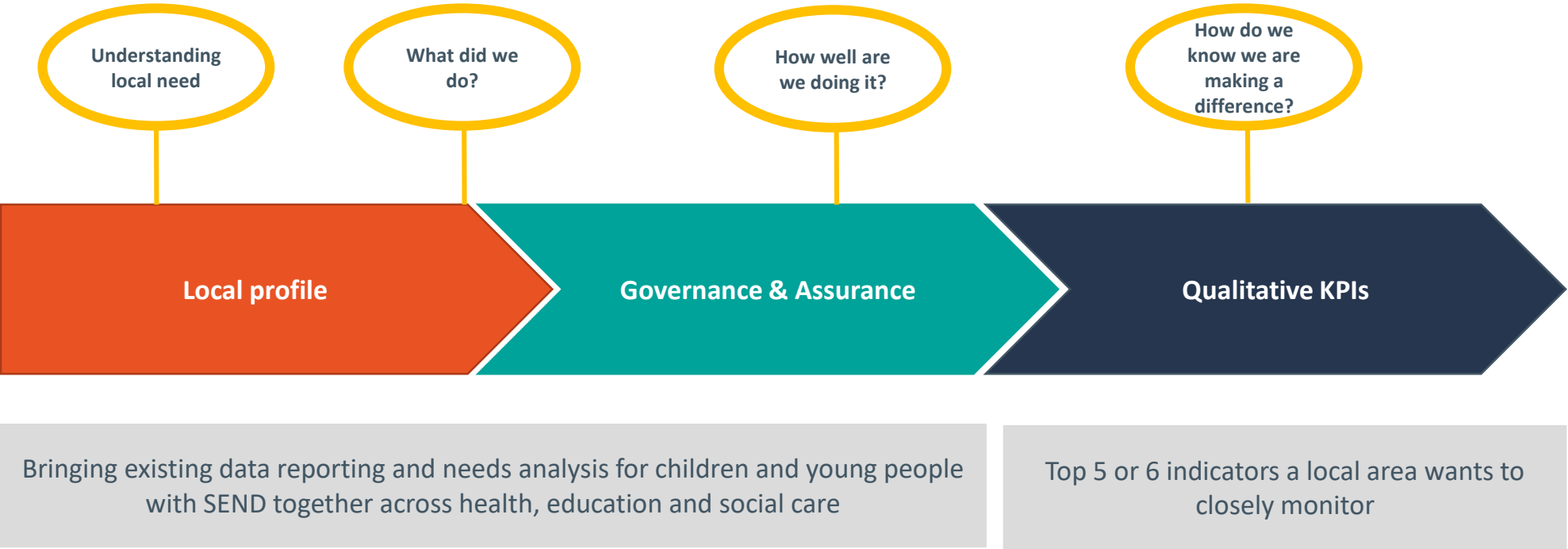
A list of national indicators that could be used to support the development of a local multi-agency SEND dataset

Data source	Indicator	Links to the logic model
<p>CCG Improvement and Assessment Framework</p>	<ul style="list-style-type: none"> • No. of personal health budgets in place per 100,000 CCG population (based on the population that the CCG is responsible for) • % of children and young people aged under 18 with a diagnosable mental health disorder receiving treatment from NHS funded community services. • No. of inpatients for each CCG in the Transforming Care Partnership, based on CCG of origin, per million GP registered adult population in the partnership. • Proportion of people on the GP learning disability register that have received an annual health check during the year. • Proportion of the population (all ages) that are included on a GP learning disability register. • Effectiveness of working relationships in the local system (linked to annual CCG stakeholder 360 survey). • Compliance with statutory guidance on patient and public participation in commissioning health and care (based on the 10 key actions from the statutory guidance for CCGs and NHS E.). 	<p>Outcomes of integration at all levels:</p> <ul style="list-style-type: none"> • I am supported to feel confident and develop my own dreams & goals. • My family works better and we are more resilient. • CYP and their receive the right support, at the right time and place. • Families are heard, involved and consulted. • New integrated models of care and support improve efficiency, through reduced duplication, better information sharing and shared learning. <p>Impact of integration:</p> <ul style="list-style-type: none"> • CYP with SEND are happy and have friends. • CYP with SEND and their parent carers are confident in navigating the system and managing their health and care needs. • CYP with SEND are safe from harm. • CYP with SEND can access the services they need to keep them healthy.

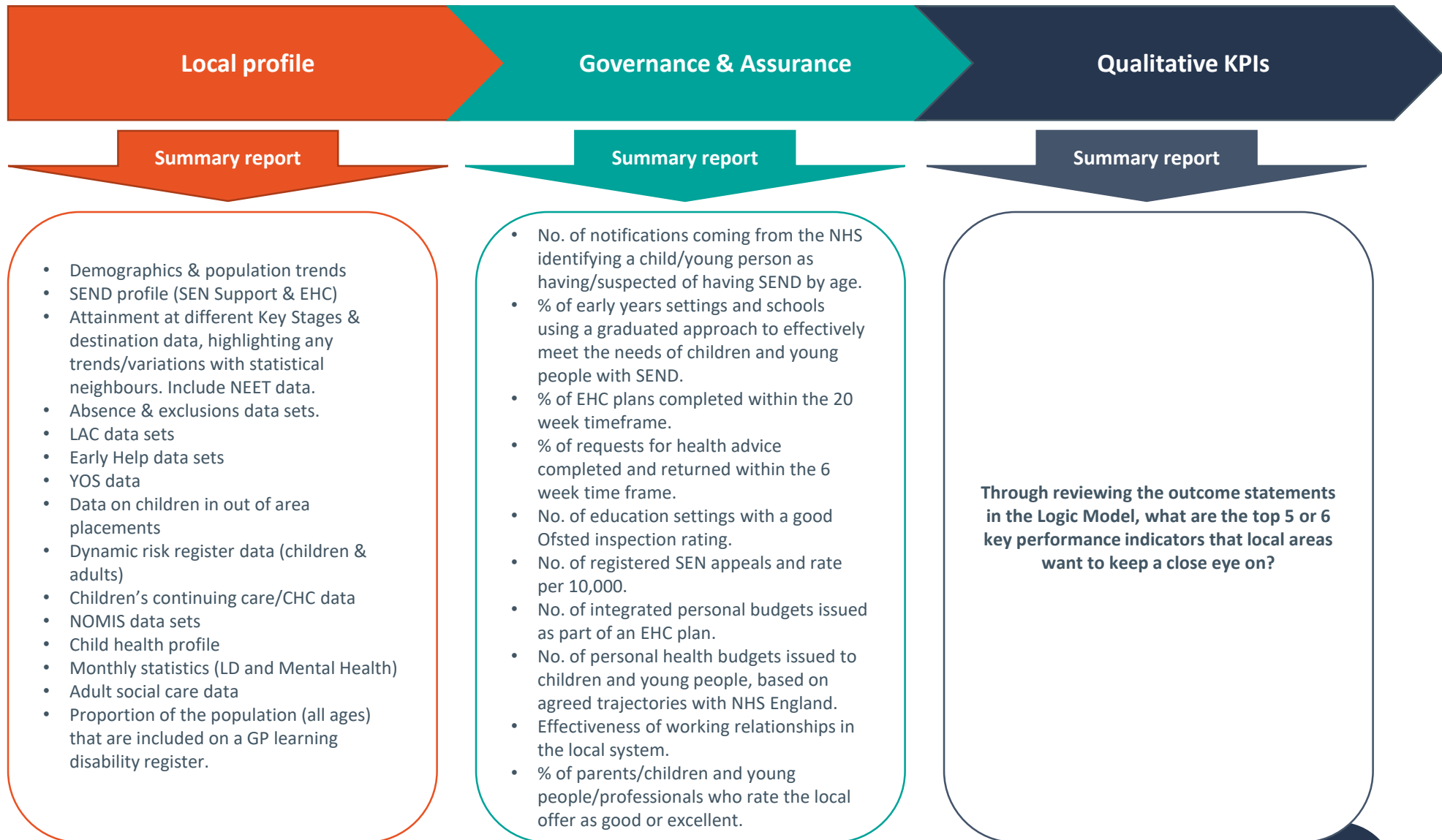
A list of national indicators from the Community Services Data Set that could be used to support the development of a local multi-agency SEND dataset

Data source	Indicator	Links to the logic model
<u>Health and Care of People with Learning Disabilities, Experimental Statistics: 2017 to 2018</u>	<ul style="list-style-type: none"> • Proportion of patients with a learning disability who had a learning disability health check, 2014-15 to 2017-18 • Proportion of patients with a learning disability who had a learning disability health check by age, 2014-15 to 2017-18 • Patient Coverage by CCG, 2017-18 • Life expectancy at birth for patients with learning disabilities by Gender, 2014-15 to 2017-18 	<p>Outcomes of integration at all levels:</p> <ul style="list-style-type: none"> • CYP and their receive the right support, at the right time and place. <p>Impact of integration:</p> <ul style="list-style-type: none"> • CYP with SEND can access the services they need to keep them healthy.
<u>Children and Young People with Special Educational Needs and Disabilities (SEND) Experimental Statistics. From October to December 2018</u>	<ul style="list-style-type: none"> • Total number of children and young people by SEND need and region recorded in Primary diagnosis, Secondary Diagnosis and Assistive Technology to Support Disability, • Count of children and young people by SEND need recorded in Primary diagnosis Secondary Diagnosis and Assistive Technology to Support Disability, England, • Count of children and young people with SEND needs recorded in Primary diagnosis, Secondary Diagnosis and Assistive Technology to Support Disability by region • Count of children and young people by number of SEND needs and region recorded in Primary, Secondary Diagnosis and Assistive Technology to Support Disability, England • Count of children and young people with SEND needs by Region and Age, recorded in Primary diagnosis, Secondary Diagnosis and Assistive Technology to Support Disability • Count of children and young people by number of SEND needs and Age recorded in Primary diagnosis Secondary Diagnosis and Assistive Technology to Support Disability, England 	<p>Outcomes of integration at all levels:</p> <ul style="list-style-type: none"> • CYP and their receive the right support, at the right time and place. • New integrated models of care and support improve efficiency through reduced duplication, better information sharing & shared learning <p>Impact of integration:</p> <ul style="list-style-type: none"> • CYP with SEND can access the services they need to keep them healthy.

Bringing different datasets together to create one source of the truth



Examples of how bringing different datasets together to create one source of the truth



Next steps

1. Engage with the local areas, system leaders and other key stakeholders to review the outcome statements in the Logic Model to identify a top 5 or 6 key performance indicators that they want to keep a close eye on.
2. Engage with local areas to review current approaches to pulling SEND data together into reports and dashboards.
3. Test out the assumptions from the AWG session that an SEND dashboard should have a local profile, governance and assurance and qualitative KPI section.
4. Work with local areas, system leaders and other key stakeholders to review and prioritise the list of indicators that they would like to include in the local profile and governance and assurance sections.
5. Engage with local areas to scope, develop and review the SEND data dashboard tool.